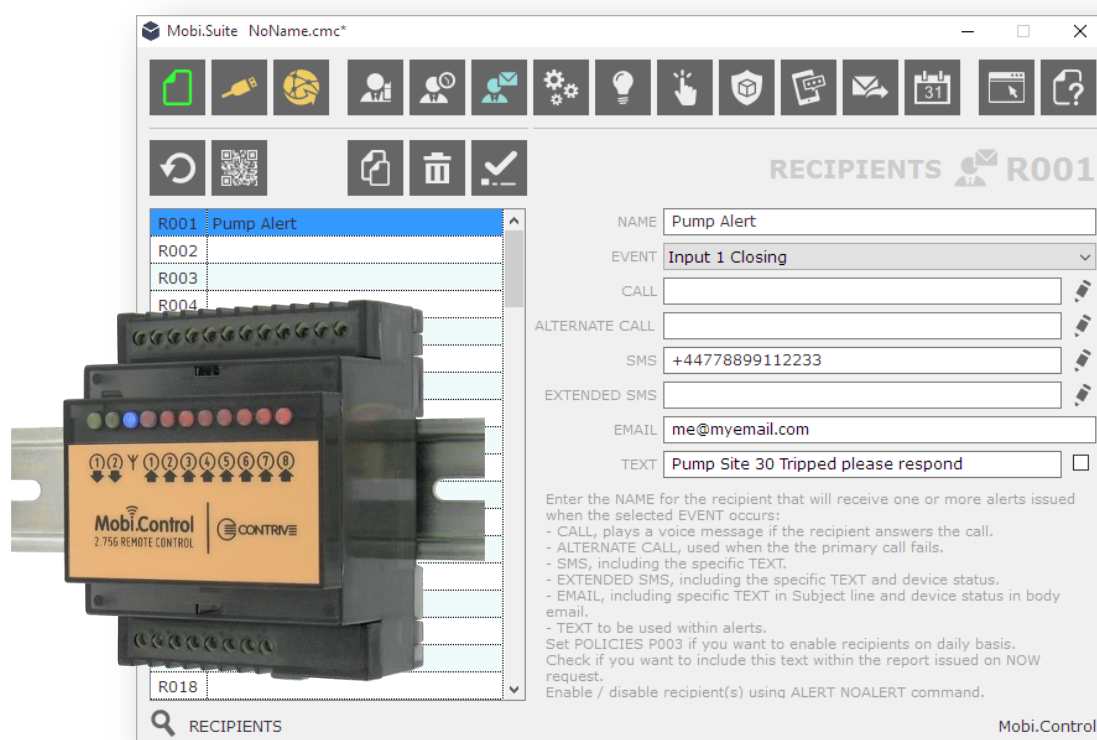


MobiSUITE

CONFIGURATION SOFTWARE QUICK START



For MobiKey, MobiSwitch and MobiControl devices



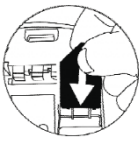
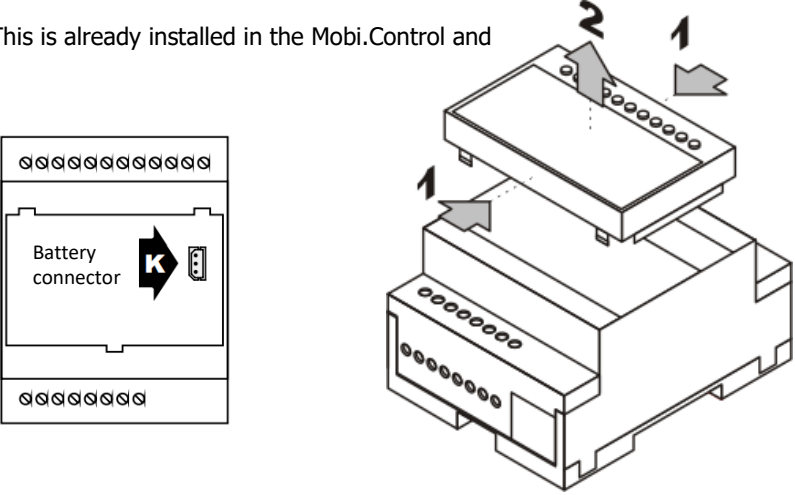
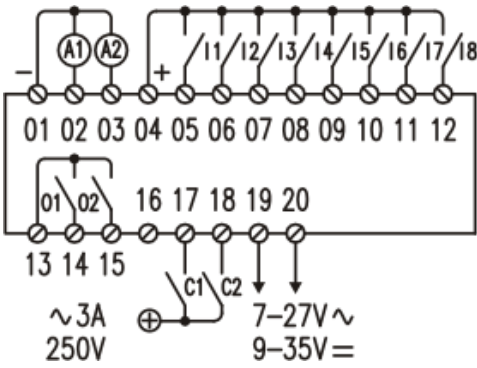
Quick start guide

Please refer to the user guide on the
MobiSuite CD for full instructions

SeNd Technology Ltd
Hungerford – RG17 9QH – UK
T: 01488 762 763
F: 07909 383 861
E: support@sendtech.co.uk
www.sendtech.co.uk

Hardware setup:

The quick start describes the basic settings for the Mobi.Control. The Mobi.Key, Mob.Switch use the same software but with a restrictive option list.

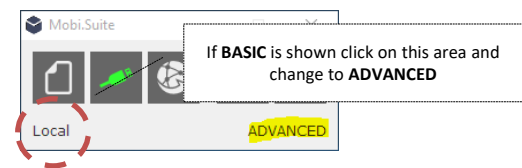
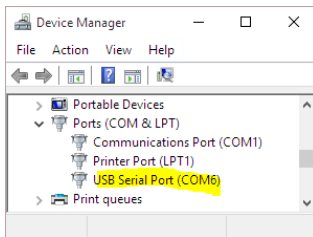
| | | |
|---|-----------------------------------------------------------------------------------------------------------|-------------------------------------------------------------------------------------------------------------------------------------------------------------------------------------------------------------------------------------------------------------------------------------------------------------------------------------------------------------------------------------------------------------------------------------------------------------------------------------------------------------------------------------------------|
| 1 | SIM card registration | If you have a new unregistered SIM card please register as per the operators instructions and check that the SIM card has credit applied and there is no SIM security PIN. |
| 2 | Insert SIM card |  <p>The SIM card fits into the slot underneath the Mobi.Control unit. Take care sliding the Sim card into the unit making sure the card is contact side down and the cut corner is to the outside of the casing.</p> |
| 3 | <p>Connect power, battery and antenna.</p> <p>The internal battery is usually connected when shipped.</p> | <p>Power is connected to terminals 19 & 20 (bottom right of unit) and are not polarity sensitive. A 9-35vDC or 7-27vAC supply may be used. Power is not polarity sensitive.</p> <p>Battery – This is already installed in the Mobi.Control and connected.</p>  <p>Antenna:</p> <p>An external antenna must be connected – please attach a FME connected antenna ensuring that the screw connection is not over tightened (hand tight is sufficient).</p> |
| 4 | External wiring | <p>Mobi.Control can accept digital, analog and counter inputs and has two relay outputs.</p> <p>Wiring diagram:</p>  <p>Usage/configuration of this inputs can be found within MobiSuite</p> |
| 5 | Check for mobile network connection. | <p>The blue LED on the front will flash to confirm network connection.</p> <p>OFF = check power, ON = No network/SIM incorrect, SLOW = On network, FAST = On network with communication is progress.</p> |

Note: Before you can connect using MobiSuite you must have a flashing blue LED on the unit.
No flashing light? – check the SIM is inserted correctly, you have SIM credit and the antenna is connected.

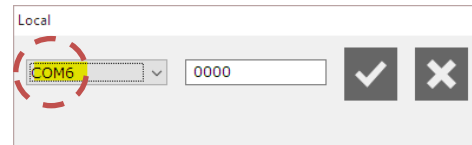
MobiSuite Software installation and usage: Copy the contents of the supplied CD to your PC before your run MobiSuite or download from: www.contrive.mobi/Vault/Mobi.Suite_WIN.zip

6 Run MobiSuite software and connect the USB serial cable from your PC to the Mobi.Control device. The USB drivers should install automatically.
Click on the USB Local icon within MobiSuite and select the corresponding COM port number. Leave the PIN code at 0000 and click "confirm"

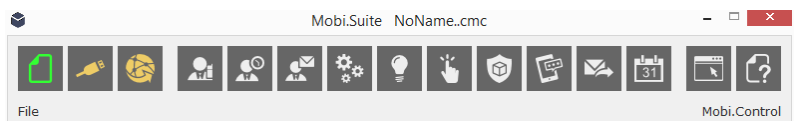
Note. If you do not know the USB COM port that Windows has assigned to the USB cable please check in the Control Panel/Device Manager on your PC



1. Click on the USB icon



2. Select the correct COM port



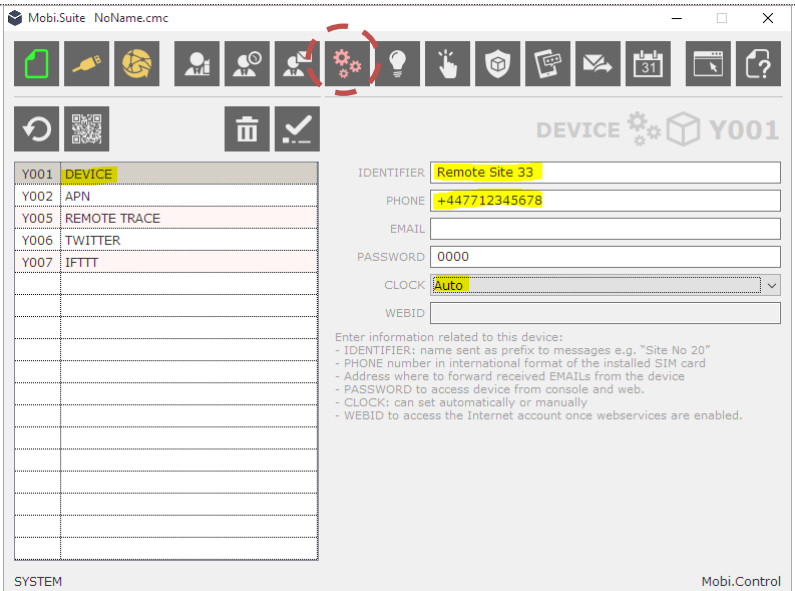
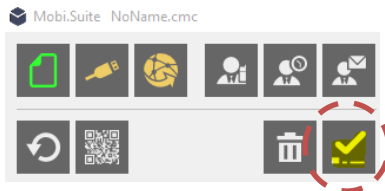
3. You are now connected.

7 System settings

Click Device and give the unit a name. Now enter the SIM card phone number you have inserted in the Mobi unit. This will enable remote configuration and auto clock settings.

IMPORTANT:

When you make any changes click the TICK icon to confirm and write to the connected device.

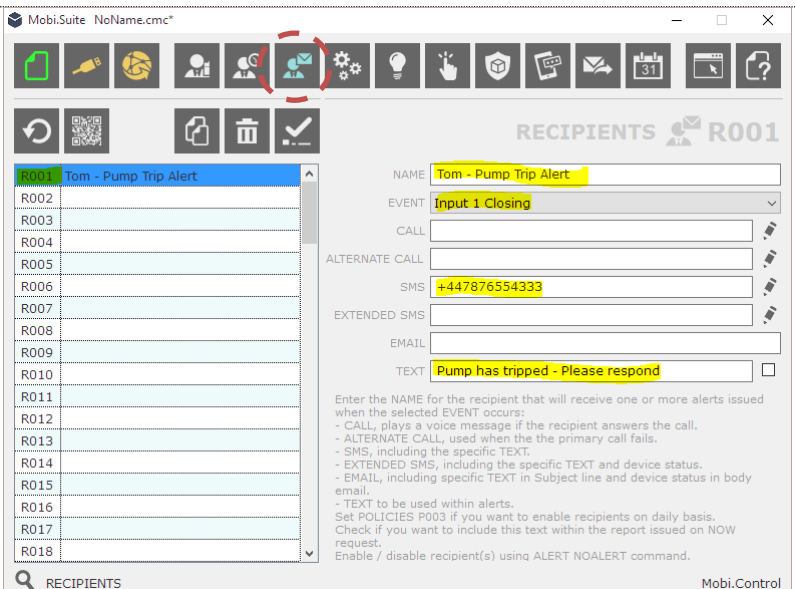


8 How to add an alert message recipient,

SMS Alerts:

Click on the recipient icon on the menu bar. The pop-up Recipients box appears – click on the first entry and the detail box appears. Now enter a name, event trigger, destination number (international format) and the alert message text in the appropriate fields. Then click the TICK icon to confirm and write to the Mobi unit.

Continue to add extra recipients in the boxes R002 etc.. You can choose different events for different recipients or the same.



9

How to add an alert message recipient,

Email Alerts:

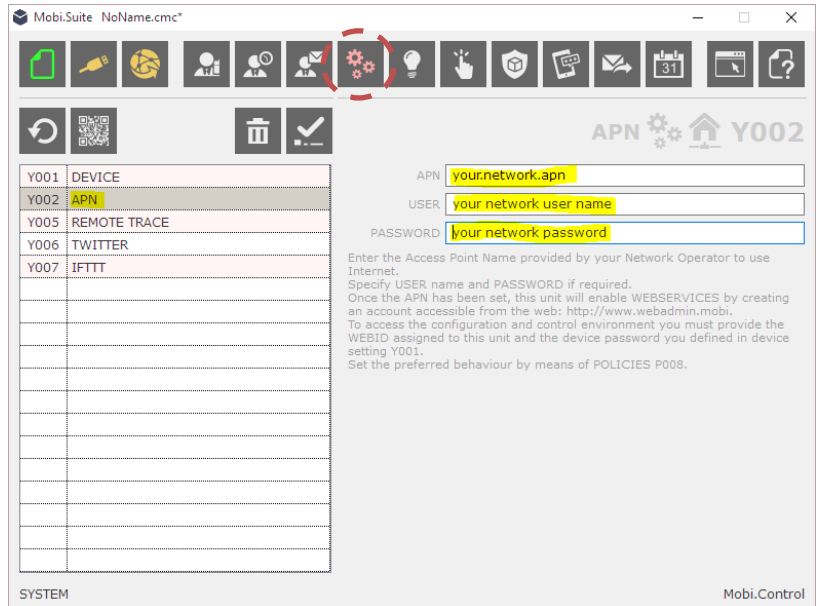
Emails are sent via your mobile networks data service so you need to set this up first in the SYSTEMS section

Enter the APN, User, Password settings for the SIM card network. See section 12 for guidance.

Then click the TICK icon to confirm and write to the Mobi unit.

Eg: for GiffGaff (O2) UK SIM

| | |
|-----------------|--------------|
| APN | giffgaff.com |
| USER ID | giffgaff |
| PASSWORD | Password |



10

How to add an alert message recipient,

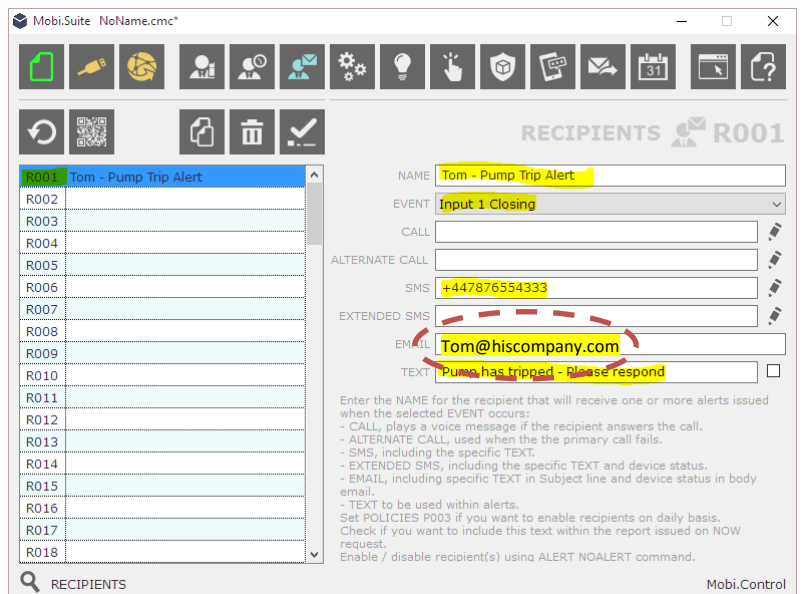
Email Alerts:

Just add the recipients email address to the recipients event – they will now get a SMS alert and email alert.

If you just require email alerts – delete the SMS number.

Continue to add extra recipients in the boxes R002 etc.. You can choose different events for different recipients or the same.

Note: Sent emails may appear as JUNK or SPAM in the receivers email client – please check and add these to the safe senders list in the client application



12

Network APN details

These details can change so please check with your mobile operator.

Please refer to MobiSuite help and support documentation for full configuration details.

UK

| Operator | APN | User | Password |
|---------------------|-------------------------|----------------------|----------|
| GiffGaff | giffgaff.com | giffgaff | password |
| Vodafone (Contract) | internet | web | web |
| Vodafone (PAYG) | pp.vodafone.co.uk | web | web |
| EE | everywhere | eecure | secure |
| Orange | orangeinternet | user | pass |
| O2 | mobile.o2.co.uk | Mobileweb (or) o2web | password |
| O2 (PAYG) | payandgo.o2.co.uk | payandgo | password |
| T-Mobile | general.t-mobile.uk | t-mobile | tm |
| Tesco | prepay.tesco-mobile.com | tescowap | password |
| Virgin | goto-virginmobile.uk | user | [BLANK] |
| Asda | asdamobiles.co.uk | wap | wap |

Ireland

| Operator | APN | User | Password |
|---------------------|-------------------|----------|----------|
| Meteor | isp.mymeteor.ie | my | meteor |
| Vodafone (Contract) | isp.vodafone.ie | vodafone | vodafone |
| Vodafone (PAYG) | live.vodafone.com | vodafone | vodafone |
| O2 | open.internet | gprs | gprs |



We have over 15 years' experience in these products so if you have any questions please contact us to help.

01488 762 763 or support@sendtech.co.uk